



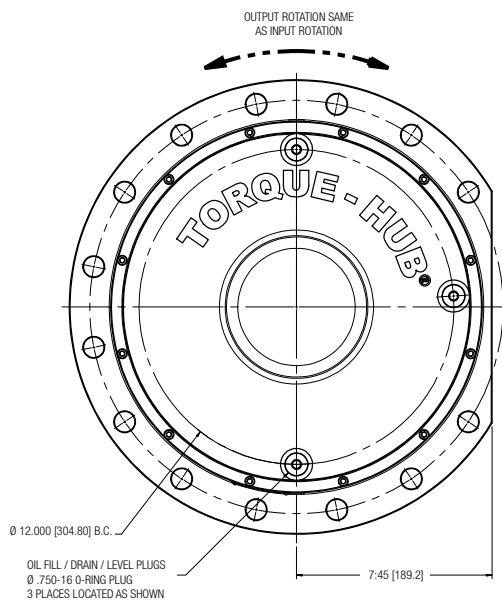
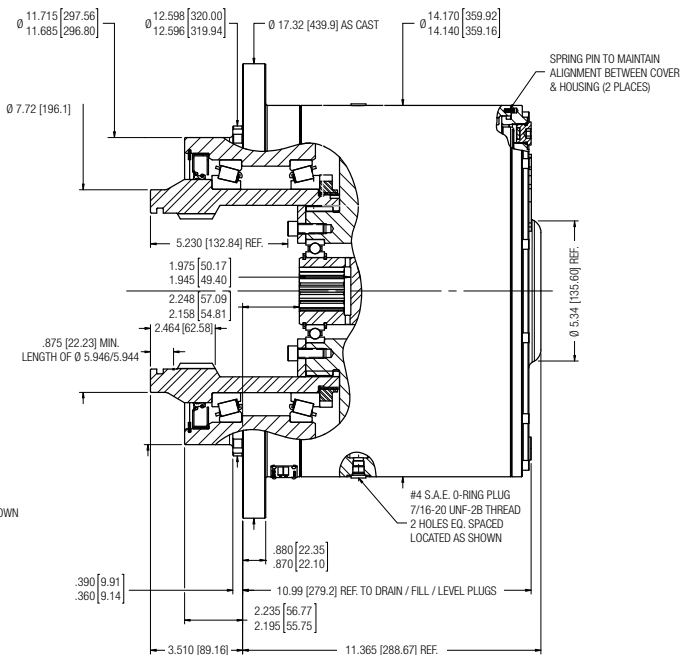
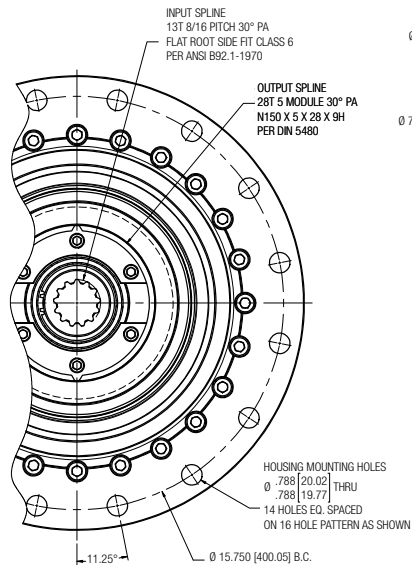
**SPICER®**  
*Torque-Hub®*

# Tubing Injector Drives **TB045 TB065 TB113**

Tubing Injectors for Oil and Gas Production



# Tubing Injector Drives | TB045

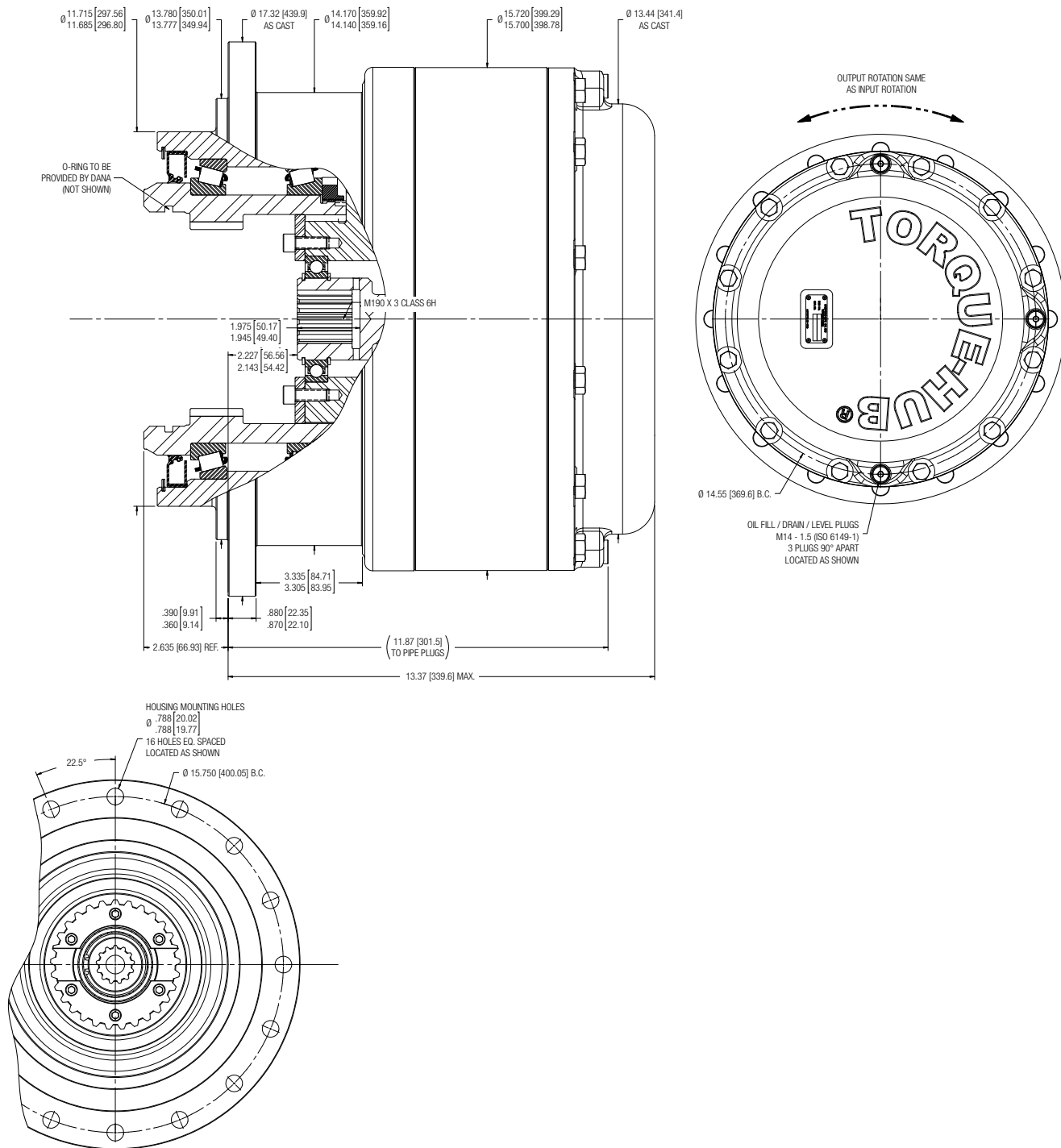


Catalog prints are representative of the units.  
Before final design, request a certified print from Dana.

## TB045 Model Formula

	TB	045	B	A	5	Z	Z	060
<b>TB – Tubing Injector Drive</b>								
<b>Frame Size / Output Torque Capacity</b> 45 – 398,000 lb-in (45,000 Nm) Max. Intermittent								
<b>Housing Configuration</b> B – Ø0.788/0.778 (14 Holes on 16 Hole Pattern) on Ø15.750 B.C. (400.05 mm)								
<b>Output Configuration</b> A – 29T 5/10 DP 30° PA per ANSI B (Internal) E – N160 X 5 X 30 X 9H per DIN 5480								
<b>Input Spline</b> 5 – 13T, 8/16 F – W45 X 2 X 21 X 9g per DIN 5480								
<b>Special Features</b> Z – None B – Cover Allowance for Sight Glass								
<b>Special Features</b> Z – None								
<b>Reduction</b> 60 – 60.38:1 42 – 42.17:1								

# Tubing Injector Drives | **TB065**

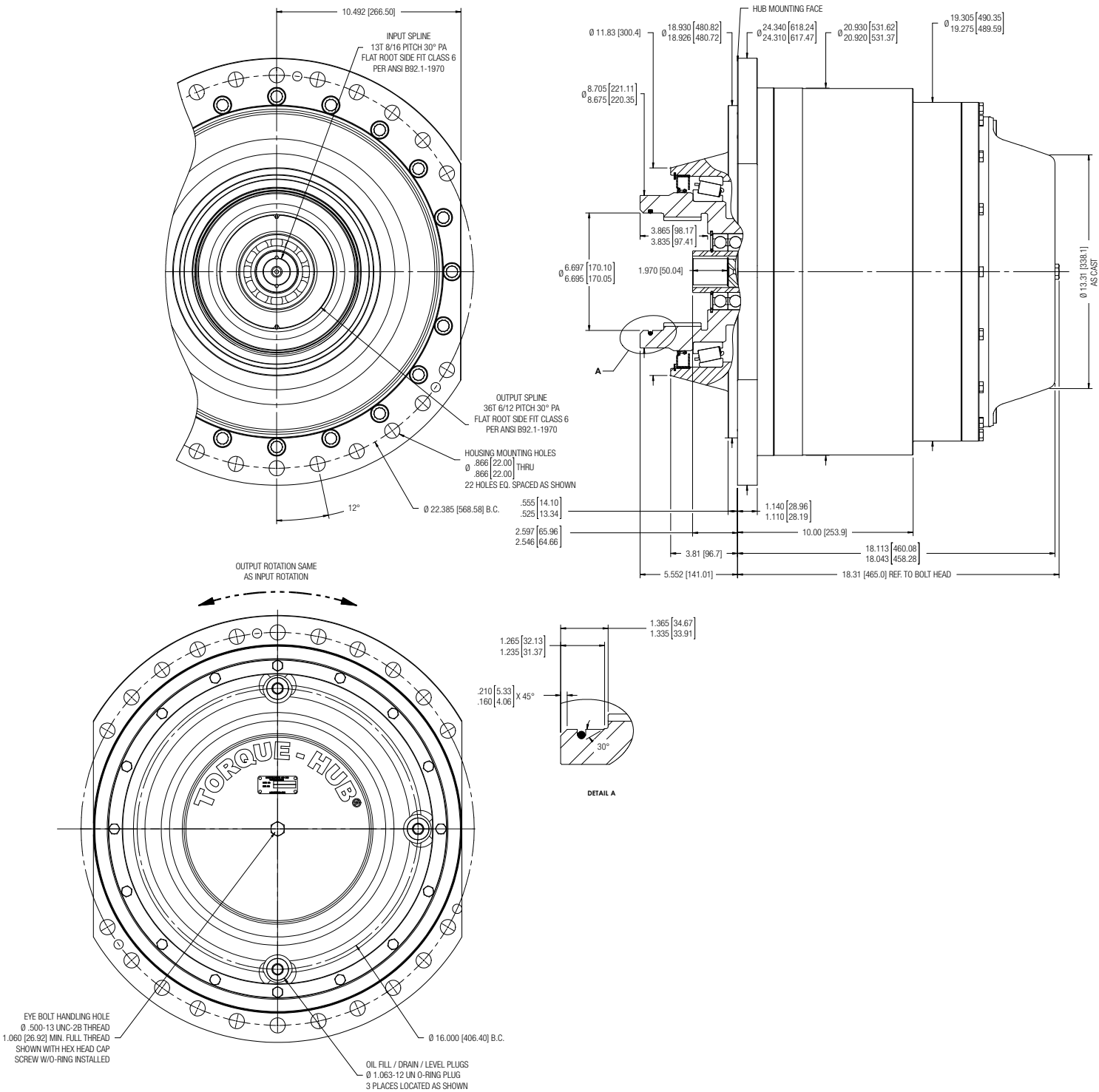


Catalog prints are representative of the units.  
Before final design, request a certified print from Dana.

**TB065 Model Formula**

	TB	065	A	A	5	Z	Z	078
<b>TB – Tubing Injector Drive</b>								
<b>Frame Size / Output Torque Capacity</b> 65 - 575,000 lb-in (65,000 Nm) Max Intermittent								
<b>Housing Configuration</b> A – Ø0.788/0.778 (16 Holes) on Ø15.750 B.C. (400.05 mm)								
<b>Output Configuration</b> A – 29T 5/10 DP 30° PA per ANSI B92.1 (Internal) E – N160 X 5 X 30 X 9H per DIN 5480								
<b>Input Spline</b> 5 – 13T, 8/16								
<b>Special Features</b> Z – None B – Cover Allowance for Sight Glass								
<b>Special Features</b> Z – None								
<b>Reduction</b> 71 – 70.94:1 78 – 78.17:1								

Tubing Injector Drives | **TB113**



Catalog prints are representative of the units.  
Before final design, request a certified print from Dana.

**TB113 Model Formula**

	TB	113	B	B	5	Z	Z	077
<b>TB – Tubing Injector Drive</b>								
<b>Frame Size / Output Torque Capacity</b> 113 – 1,000,000 lb-in (113,000 Nm) Max. Intermittent								
<b>Housing Configuration</b> B – Ø22mm (22 Holes) on Ø22.385 B.C. (568.58 mm)								
<b>Output Configuration</b> B – 36T 6/12 DP 30°PA per ANSI B92.1 (Internal)								
<b>Input Spline</b> 5 – 13T, 8/16								
<b>Special Features</b> Z – None B – Cover Allowance for Sight Glass								
<b>Special Features</b> Z – None								
<b>Reduction</b> 71 – 71.47:1 77 – 76.89:1 87 – 86.69:1 103 – 102.92:1								



Spicer® Torque-Hub® is a registered trademark of Dana Limited.

**Dana.com/GrazianoFairfield**

**Dana Incorporated**  
Off-Highway Drive and Motion Technologies  
2400 Sagamore Parkway South  
P.O. Box 7940  
Lafayette, Indiana 47903 USA  
Office: +1-765-772-4000



**SPICER®**  
*Torque-Hub®*